

Bulletin 02

Version 2019-7-24

# World Masters Ski Orienteering Championships



English



## WINTER WORLD MASTERS GAMES INNS' BRUCK 2020

10. - 19. 01. 2020

[www.innsbruck2020.com](http://www.innsbruck2020.com)



**INNS' BRUCK**

**Seefeld**



INTERNATIONAL  
MASTERS  
GAMES  
ASSOCIATION

RECOGNISED  
BY THE IOC



# Bulletin 2

## *Winter World Master Games 2020 World Masters Ski Orienteering Championships 2020*

### **1 Preamble:**

For the first time the World Masters Ski Orienteering Championships will be held together with the Winter World Masters Games 2020 (WWMG).

The Winter World Masters Games 2020 will be the biggest winter - multi sports event for 30+ year olds. 3000+ athletes are estimated to take part in one of 12 different sports. Amateur athletes get the unique chance, to compete together and rub shoulders with ex-professionals. The WWMG promote friendship between athletes through fair competition, social activities and cultural programs.

### **2 Organizers**

#### [Orienteering Innsbruck Imst](#)

Event director: Hans Georg Gratzner  
Competition secretary: Adrian Wickert  
IOF Event Advisor: Viktor Kirianov  
National Controller: Wolfgang Pötsch

Address: Hans Georg Gratzner  
Arzlerstraße 48a  
A-6020 Innsbruck  
Tel: +43 664 5634001

Website [www.innsbruck2020.com/](http://www.innsbruck2020.com/)  
Mail [adrian.wickert@gmx.at](mailto:adrian.wickert@gmx.at)

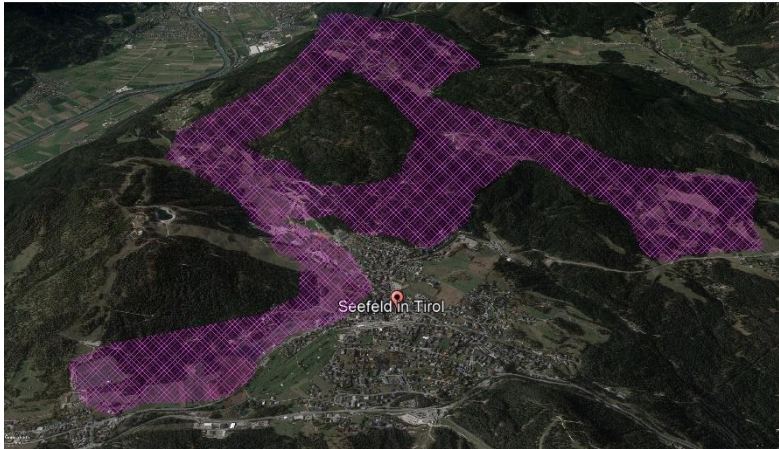
### **3 Venue**

The Competition Center is planned at the Casino Arena in Seefeld.  
(Möserer Straße 632 6100 Seefeld/Tyrol Austria)

The distance from Innsbruck International Airport to Seefeld is approximately 30km by car or Train. The nearest railway station is in Seefeld.

## 4 Embargoed Area

The Seefeld Plateau between 15<sup>th</sup> August 2019 and 20<sup>th</sup> January 2020  
Exception Summer Roller Track at the casino Arena until 30<sup>th</sup> of October



## 5 Dates and types of the competition

The Competition will be held between the 14th and 19th January.  
The preliminary dates are the following:

- 14.01.2020 – Model Event
- 15.01.2020 – Sprint
- 17.01.2020 – Middle
- 19.01.2020 – Long

## 6 Classes and Participation restrictions

- |         |           |            |
|---------|-----------|------------|
| • M/W30 | 1990-1986 | only WMMG  |
| • M/W35 | 1985-1981 | WMMG/WMSOC |
| • M/W40 | 1980-1976 | WMMG/WMSOC |
| • M/W45 | 1975-1971 | WMMG/WMSOC |
| • M/W50 | 1970-1966 | WMMG/WMSOC |
| • M/W55 | 1965-1961 | WMMG/WMSOC |
| • M/W60 | 1960-1956 | WMMG/WMSOC |
| • M/W65 | 1955-1951 | WMMG/WMSOC |
| • M/W70 | 1950-1946 | WMMG/WMSOC |
| • M/W75 | 1945-1941 | WMMG/WMSOC |
| • M/W80 | 1940-1936 | WMMG/WMSOC |
| • M/W85 | 1935-1931 | WMMG/WMSOC |
| • M/W90 | 1930-1926 | WMMG/WMSOC |

## 7 Entry fees/Deadline

Entry fee 180€ per person  
Entry deadline 01.11.2019  
Late Entry deadline 15.12.2019  
Late Entry fee 210€ per person

The registration fee includes the following benefits:

- Participation in the WWMG 2020
- Participation in the WMSOC 2020
- Participation in the official opening ceremony
- Free use of public transport in and around Innsbruck
- Starter package with attractive goodies
- Supporting program
- Official certificate of participation (digital)
- Award ceremony and medals for the first 3 of each class
- Results on the Internet
- Participation in the closing ceremony

## 8 Timing

Sport Ident Air+ will be used.  
SIAC Cards can be rented for 10€ for all competitions.  
A deposit of 100€ will be charged for every rent chip.

## 9 Registration/Payment

Registration is Possible via [Eventor](#)  
Please instruct your bank to forward the payment orders to:  
Bank HYPO TYROL BANK  
Beneficiary DI Gratzner Hans Georg, Arzlerstrasse 48a, A-6020 Innsbruck  
BIC HYPTAT22  
IBAN AT47 5700 0300 5536 9051  
Note the bank transfer must be free of charge for the organizers  
The payment has to be on our account at latest two weeks after the entry otherwise the entry will be redrawn.

## 10 Terrain Type / Opportunities for Training

Typical alpine valley with forest, marches and open fields. The terrain is situated between 1200m and 1400m.



- On 11<sup>th</sup> and 12<sup>th</sup> January a National Ski O Event will be held in Kaltenbrunn near Garmisch-Partenkirchen (GER)  
About 30km away from Seefeld  
Information: <http://www.ski-orienteing.de/>
- Also, on the 11<sup>th</sup> of January the "Kaiser Max Lauf" a Visma Ski Classics Event will be held in Seefeld  
Information <http://kaisermaximilianlauf.com>
- There are similar terrains with Ski Orienteering Maps in Imst and Wipptal valley.  
For more information please contact [office@kompass-innsbruck.at](mailto:office@kompass-innsbruck.at)

## 11 Visas

You can find a list of countries which need a Visa for Austria here:  
[http://www.bmi.gv.at/cms/BMI\\_Fremdenpolizei/visumspflichten/start.aspx](http://www.bmi.gv.at/cms/BMI_Fremdenpolizei/visumspflichten/start.aspx)

## 12 How to get to Seefeld

By plane: Innsbruck Airport or Munich Airport  
By train: local trains from Munich and Innsbruck  
By car: From Innsbruck via Zirl/Telfs or from Munich via Garmisch-Partenkirchen

## 13 Accommodation

A lot of different types of accommodations are offered by the local tourist board.  
For further questions according to the accommodation, feel free to contact our partner Eurotours  
[office@eurotours.at](mailto:office@eurotours.at)  
<https://www.eurotours.at/en/>